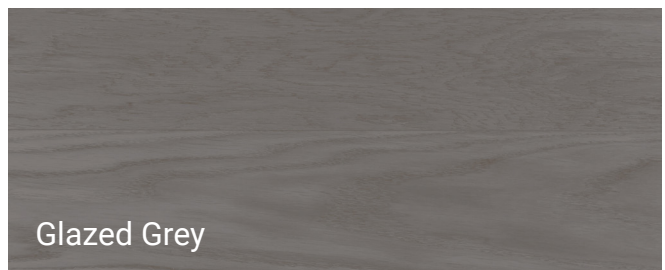
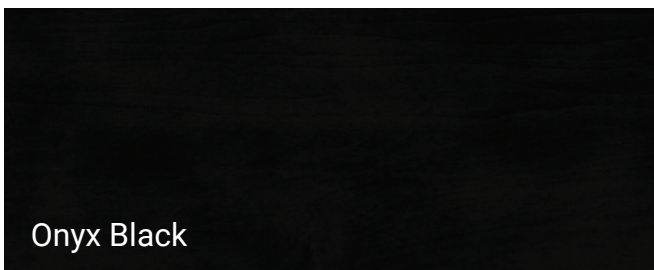
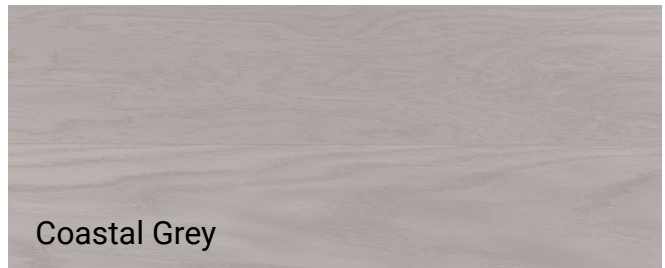
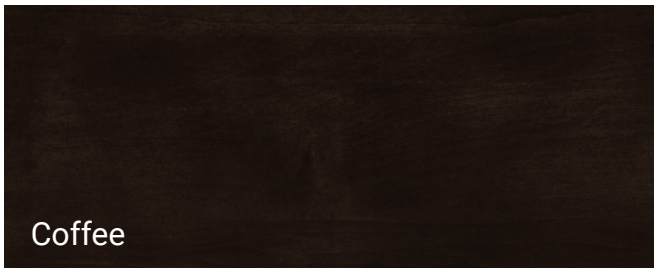
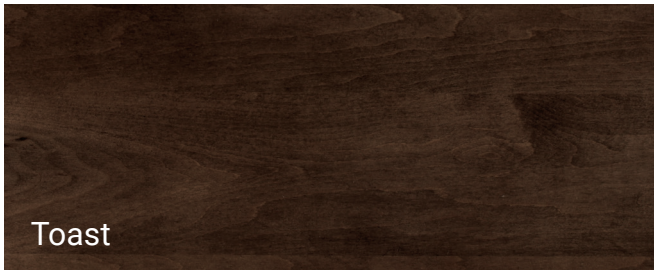
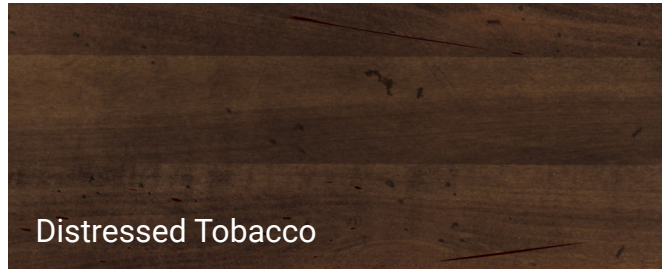
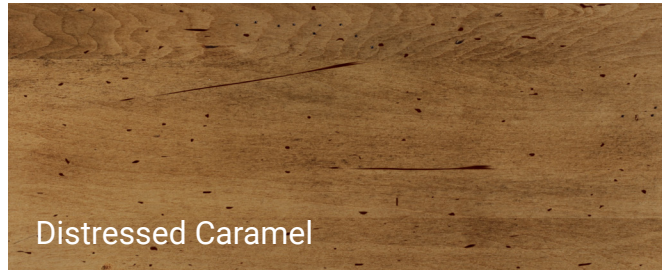


# **JACK** Standard Wood Finishes

Our game tables and chairs are made from kiln-dried, 100% solid Maple hardwood. After a thorough sanding, wood is treated with a non-grain rasing (NGR) solution to equalize the tones of the natural wood. After a careful application of stain, the wood is then sealed with a post-catalyzed conversion varnish to seal out moisture and add visual depth and clarity to the finish. After the sealer has dried, it is sanded again for a smooth finish and given a further topcoat of post-catalyzed conversion varnish.





# JACK

## About Our Primary Wood Finishes



### Sand

Sand is newer finish is one of our lightest finishes with a warm glow and visible woodgrain. Sand pairs well with all furniture styles and virtually felt colors.



### Frost

Frost is an off-white, nearly opaque finish with a slight warmth. It is new for 2024 and pairs well with contemporary designs. Note that Frost will be more prone to show nicks and scratches over time compared to other finishes.



### Caramel

Caramel is one of our lighter finishes with a warm glow and visible woodgrain. Caramel adds airiness to a room and pairs well with transitional and contemporary styles.



### Distressed Caramel 10% Upcharge

We lightly stress our Caramel finish with pitting and scratches which are then highlighted with a slightly darker stain and topped off with a light glazing to create the Distressed Caramel finish.



### Tobacco

Tobacco is a traditional favorite combining warmth, moderate darkness and visible woodgrain. Tobacco works equally well across all design styles and cloth colors.



### Distressed Tobacco 10% Upcharge

Darkened pitting and scratch stains give our Distressed Tobacco its distinctive character. This lends a slightly darker and more casual look and feel to the regular Tobacco finish.



### Toast

Toast is slightly lighter and cooler than Coffee. Toast pairs especially well with Khaki, Camel, Taupe, Bottle Green, Navy and Wine billiard cloth.



### London

Similar to Coffee but slightly lighter with a distinctive grey cast, London is a sophisticated finish with a contemporary feel. Pair it with Khaki, Steel Grey, Charcoal or Navy for an updated look.



### Coffee

Coffee is the darkest of our finishes short of Onyx. Very similar to Umber but slightly darker and cooler. Coffee pairs especially well with Khaki, Taupe, Black, Bottle Green and Wine billiard cloth.



### Glazed Grey 10% Upcharge

Glazed Grey has a striking, modern feel. The opaque grey toner hides the grain pattern but allows the texture to show through. Glazed Grey pairs well with Academy, Charcoal, Black and Navy.

**Please Note:** Jack Game Room can often custom match existing finishes. Please call us at 833.833.6050 or email us at [support@jackgameroom.com](mailto:support@jackgameroom.com) for further information.

# JACK Oak Wood Premium Finishes

Our game tables and chairs are available in kiln-dried, 100% solid oak hardwood for an upcharge of 20%. After a thorough sanding, wood is treated with a non-grain raising (NGR) solution to equalize the tones of the natural wood. After a careful application of stain, the wood is then sealed with a post-catalyzed conversion varnish to seal out moisture and add visual depth and clarity to the finish. After the sealer has dried, it is sanded again for a smooth finish and given a further topcoat of post-catalyzed conversion varnish.



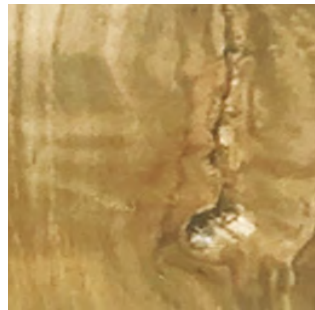
Dark Oak  
20% Upcharge



Graphite Oak  
20% Upcharge



Rustic Natural White Oak  
20% Upcharge



**NOTE:** Rustic White Oak can will contain some live knots and live edges.